



Copyright (c) 2025 Praxis3, LLC
All reports, plans, specifications, computer files, field data, notes and other documents and instruments prepared by Praxis3 shall retain all copyright law, statutory and other ownership rights, including copyright marks.
This drawing may not be reproduced in whole or in part without written permission of Praxis3. It is to be returned upon request. Stamps as stated are valid on the original drawing.

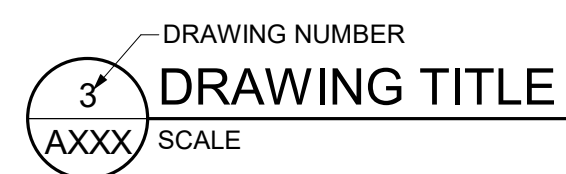
Rev	Date	Comments
	05/22/26	PERMIT & BID

ABBREVIATIONS

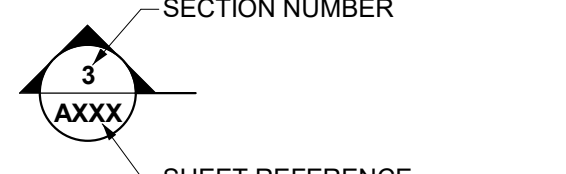
#/FT	PER FOOT	IBC	INTERNATIONAL BUILDING CODE
@	AT	INSUL	INSULATION
AB	AIR CONDITIONING	INT	INTERIOR
ABV	ANCHOR BOLT	LIA	LINE ITEM ALTERNATE
AC	ABOVE	LAM	LAMINATE
ACU	AIR CONDITIONING	LAV	LAVATORY
ACMU	ARCHITECTURAL CONCRETE MASONRY UNIT	LLH	LONG LEG HORIZONTAL
ACM	ALUMINUM COMPOSITE METAL	LLV	LONG LEG VERTICAL
ACoust	ACOUSTICAL	LSC	LIFE SAFETY CODE
ACP	ACOUSTICAL CEILING PANEL	MATL	MATERIAL
ACT	ACOUSTICAL CEILING TILE	MAX	MAXIMUM
ADJ	ADJACENT	MDF	MEDIUM-DENSITY FIBERBOARD
AFF	ABOVE FINISHED FLOOR	MECH	MECHANICAL
AIA	AMERICAN INSTITUTE OF ARCHITECTS	MFR	MANUFACTURER
AIB	AIR INFILTRATION BARRIER	MIN	MINIMUM
AISC	AMERICAN INSTITUTE OF STEEL CONSTRUCTION	MISC	MISCELLANEOUS
ALT	ALTERNATE	MO	MASONRY OPENING
ALUM	ALUMINUM	MOD	MODIFIED
ANSI	AMERICAN NATIONAL STANDARDS INSTITUTE	MOD BIT	MODIFIED BITUMEN
APPROX	APPROXIMATE	MR	MOISTURE RESISTANT
ARCH	ARCHITECT	MTD	MOUNTED
ASTM	AMERICAN SOCIETY FOR TESTING AND MATERIALS	MTL	METAL
AUTO	AUTOMATIC	NFPA	NATIONAL FIRE PROTECTION ASSOCIATION
AWB	AIR AND WEATHER BARRIER	NOT IN CONTRACT	NOT IN CONTRACT
BD	BOTTOM OF...	NRP	NON-REMOVABLE PIN
BF	BOARD	NTS	NOT TO SCALE
BF	BOARD FOOT	OC	ON CENTER
BFA	BARRIER FREE ACCESSIBLE	OH	OPPOSITE HAND
BLKG	BLOCKING	OPNG	OPENING
BLW	BELOW	OPNG	OWNER FURNISHED CONTRACTOR INSTALLED
BM	BEAM	PCP	PORTLAND CEMENT PLASTER
BOC	BACK OF CURB	PL	PLASTIC LAMINATE
BOH	BACK OF HOUSE	PFT	PORCELAIN FLOOR TILE
BRK	BRICK	PL	PLATE
BTWN	BETWEEN	PLMB	PLUMBING
C	CHANNEL	PLYWD	PLYWOOD
CAB	CABINET	PT	PAINT OR PRESSURE TREATED
CC	COLOR CHANGE	PVC	POLYVINYL CHLORIDE
CER	CERAMIC	QT	QUARRY TILE
CFMF	COLD-FORMED METAL FRAMING	RAD	RADIUS
CIP	CAST-IN-PLACE	RCP	REFLECTED CEILING PLAN
CJ	CONTROL JOINT	RD	ROOF DRAIN
CL	CENTERLINE	REINF	REINFORCED
CLG	CEILING	REQD	REQUIRED
CMU	CONCRETE MASONRY UNIT	RI	RIGID INSULATION
CO	CLEAN OUT	RJ	RAKED JOINT
COL	COLUMN	RL	RAIN LEADER
CONC	CONCRETE	RO	ROUGH OPENING
CONT	CONTINUOUS	RTO	RATED
CSI	CONSTRUCTION SPECIFICATIONS INSTITUTE	S4S	SMOOTH FOUR SIDES
CT	CERAMIC TILE	SC	SOLID CORE
D4S	DRESSED FOUR SIDES	SHLV	SHELVES
DBL	DOUBLE	SHT	SHEATHING
DET	DETAIL	SIM	SIMILAR
DIAG	DIAGONAL	SQ	SQUARE
DLO	DAYLIGHT OPENING	SS	STAINLESS STEEL
DS	DOWNSPOUT	STD	STANDARD
DWG	DRAWING	STL	STEEL
E/	EDGE OF...	STOR	STORAGE
EB	EXPANSION BOLT	STR	STRUCTURAL
EFC	EPOXY FLOOR COATING	SUB	SUBCONTRACTOR
EIFS	EXTERIOR INSULATION FINISHING SYSTEM	SUSP	SUSPENDED
EJ	EXPANSION JOINT	T/	TOP OF...
ELEC	ELECTRICAL	T&G	TONGUE AND GROOVE
EOS	EDGE OF SLAB	TEL	TELEPHONE
EQ	EQUAL	TEXT	TEXTURE
EQUIP	EQUIPMENT	THK	THICKNESS
ERD	EMERGENCY ROOF DRAIN	THOLD	THRESHOLD
ES	EACH SIDE	TJ	TOOL JOINT
EW	EACH WAY	TOS	TOP OF STEEL
EXP	EXPANSION	TPO	THERMOPLASTIC POLYOLEFIN
EXT	EXTERIOR	TYP	TYPICAL
F/	FACE OF...	UNO	UNLESS NOTED OTHERWISE
FAB	FABRICATE	VB	VAPOR BARRIER
FE	FIRE EXTINGUISHER - WALL MOUNT	VCT	VINYL COMPOSITION TILE
FEC	FIRE EXTINGUISHER - RECESSED CABINET	VENT	VENTILATION
FFE	FINISH FLOOR ELEVATION	VERT	VERTICAL
FIN	FINISH	VHB	VERY HIGH BOND
FLR	FLOOR	VIF	VERIFY IN FIELD
FR	FIRE RATED GYPSUM WALLBOARD	VWC	VINYL WALLCOVERING
FR GWB	FIRE RETARDANT TREATED	W/	WITH
FTG	FOOTING	WB	WEATHER BARRIER
GA	GAUGE	WWF	WELDED WIRE FABRIC
GALV	GALVANIZED	WWM	WELDED WIRE MESH
GC	GENERAL CONTRACTOR		
GTR	GUTTER		
GWB	GYPSUM WALLBOARD		
GYP BD	GYPSUM WALLBOARD		
HB	HOSE BIBB		
HGT	HEIGHT		
HORIZ	HORIZONTAL		

SYMBOLS LEGEND

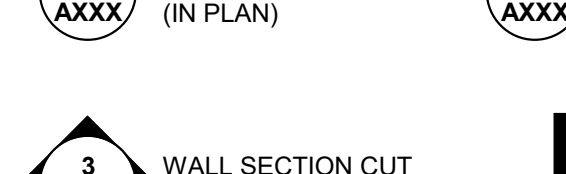
DRAWING TITLE MARK



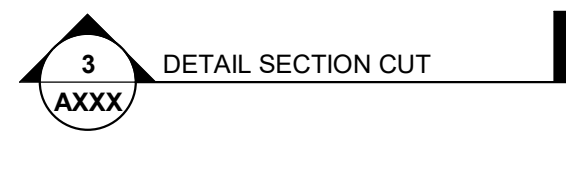
SECTION MARK



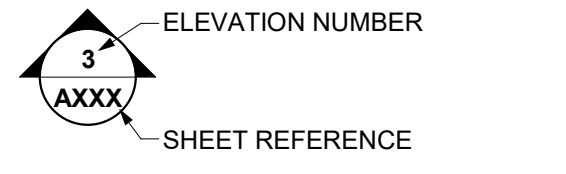
BUILDING SECTION CUT (IN PLAN)



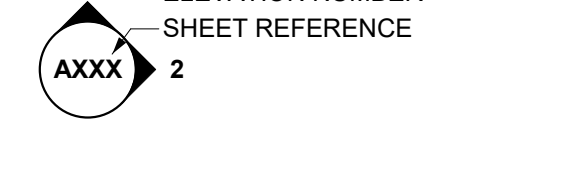
WALL SECTION CUT (IN ELEVATION)



DETAIL SECTION CUT



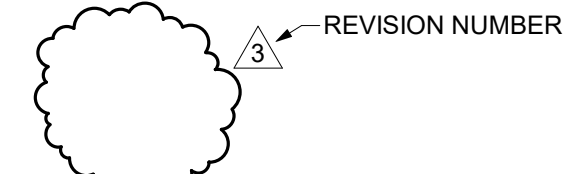
EXTERIOR ELEVATION MARK



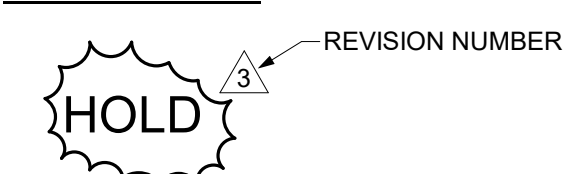
INTERIOR ELEVATION MARK



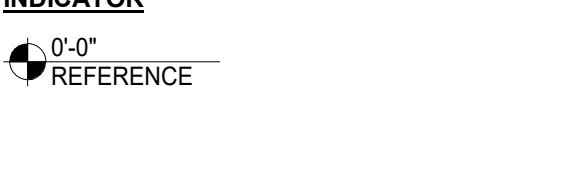
DETAIL CALLOUT



REVISED CLOUD & REVISION TRIANGLE



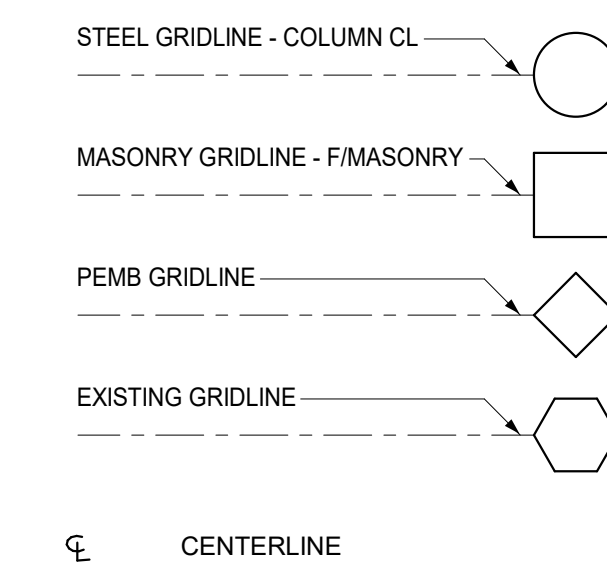
AREA ON HOLD & REVISION TRIANGLE



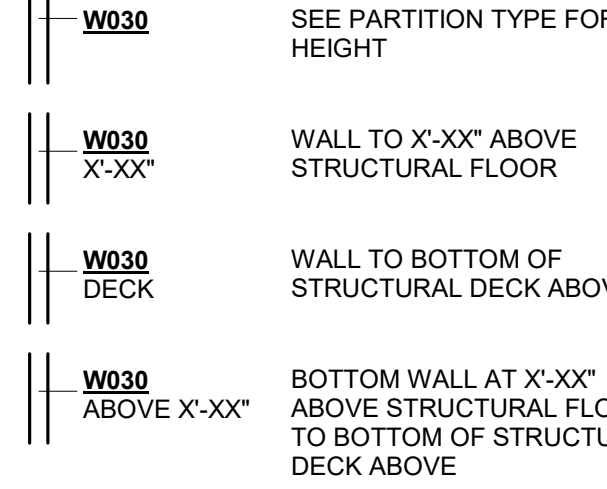
ELEVATION / LEVEL INDICATOR



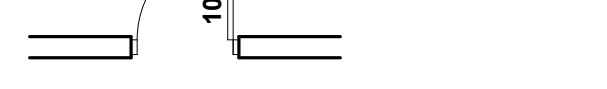
COLUMN BUBBLE & GRID LINES



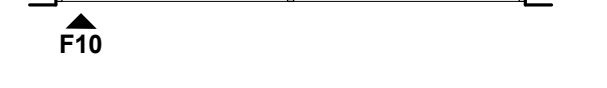
PARTITION TYPE TAG



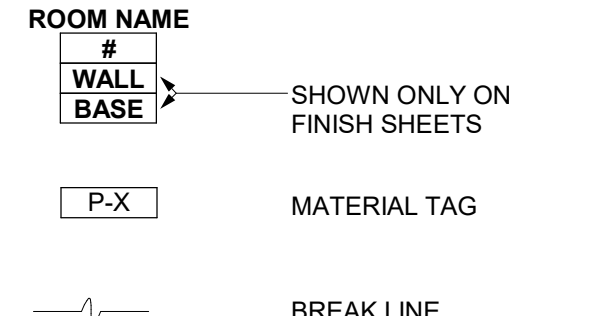
DOOR NUMBER



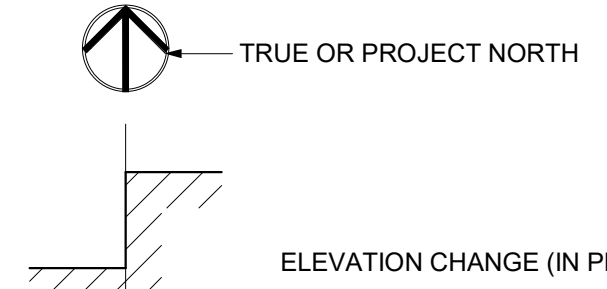
FRAME NUMBER



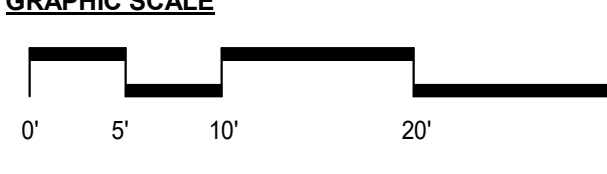
ROOM NAME, NUMBER, FINISHES



NORTH ARROW



GRAPHIC SCALE



GENERAL NOTES

THE CONTRACTOR SHALL BE RESPONSIBLE FOR COMPLIANCE WITH THE REQUIREMENTS LISTED IN THE PROJECT MANUAL AND THE DRAWINGS (CONTRACT DOCUMENTS), INCLUDING BUT NOT LIMITED TO THE FOLLOWING:

- FIELD VERIFY ALL CONDITIONS AND DIMENSIONS PRIOR TO COMMENCING ANY WORK. VERIFY EXISTING ELEVATIONS AND LOCATIONS TO BE JOINED PRIOR TO COMMENCING CONSTRUCTION. NOTIFY THE ARCHITECT OF ALL INCONSISTENCIES. DO NOT COMMENCE THE WORK PRIOR TO RECEIPT OF MODIFICATIONS FROM THE ARCHITECT.
- DO NOT SCALE THE DRAWINGS. IF DIMENSIONS ARE MISSING, NOTIFY THE ARCHITECT.
- REVIEW AND APPROVE ALL SUBMITTALS BEFORE SUBMITTING TO THE ARCHITECT. THE ARCHITECT SHALL REVIEW SUBMITTALS FOR GENERAL CONFORMANCE WITH THE CONTRACT DOCUMENTS. ARCHITECTS APPROVAL OF SPECIFIC COMPONENTS DOES NOT INDICATE APPROVAL OF THE COMPLETE ASSEMBLY. THE GENERAL CONTRACTOR IS SOLELY RESPONSIBLE FOR CORRECTING ALL NONCOMPLYING WORK INSTALLED WITHOUT ARCHITECT ACCEPTED SUBMITTALS.
- THE CONTRACTOR IS SOLELY RESPONSIBLE FOR ALL WORK AND MATERIALS INCLUDING THAT OF ALL SUBCONTRACTORS.
- REPORT TO THE ARCHITECT ALL ERRORS, INCONSISTENCIES OR OMISSIONS FOUND IN THE CONTRACT DOCUMENTS. THE GENERAL CONTRACTOR IS RESPONSIBLE FOR CORRECTING ALL ERRORS NOT BROUGHT TO THE ATTENTION OF THE ARCHITECT. CORRECTION OF ERRORS SHALL BE APPROVED BY THE ARCHITECT.
- LOCATE ALL EXISTING UTILITIES INCLUDING ANY NOT SHOWN IN THE CONTRACT DOCUMENTS. PROTECT ALL EXISTING UTILITIES FROM DAMAGE DURING THE EXECUTION OF THE WORK. THE CONTRACTOR IS SOLELY RESPONSIBLE FOR CORRECTING ANY DAMAGE CAUSED BY OPERATIONS DURING THE EXECUTION OF THE WORK.
- PROVIDE ALL TEMPORARY SUPPORT FACILITIES INCLUDING BUT NOT LIMITED TO:
 - a. WATER
 - b. ELECTRICAL POWER
 - c. TOILET FACILITIES.
- THE CONTRACTOR IS SOLELY RESPONSIBLE FOR SAFETY AND SECURITY OF THE SITE UNTIL THE COMPLETION OF PROJECT CLOSEOUT.
- REMOVE ALL DEBRIS FROM THE SITE DAILY. THE SITE SHALL BE KEPT BROOM CLEAN AT ALL TIMES.
- PERMANENTLY IDENTIFY ALL FIRE AND SMOKE BARRIERS AND PARTITIONS, INCLUDING BUT NOT LIMITED TO:
 - a. RATED CORRIDOR WALLS.
 - b. SMOKE BARRIERS AND PARTITIONS.
 - c. HORIZONTAL EXITS.
 - d. EXIT ENCLOSURES.

WITH MINIMUM ONE INCH HIGH LETTERS IN SIGNS OR STENCILING, LOCATED ABOVE CEILING OR OTHER CONCEALED LOCATIONS, SPACED A MAXIMUM OF 10 FEET ON CENTER; PROVIDE THE FOLLOWING CONTENT:

"FIRE AND/OR SMOKE RATED WALL-PROTECT ALL OPENINGS"

- MAINTAIN ALL FIRE AND SMOKE RATINGS SHOWN IN THE CONTRACT DOCUMENTS. PROVIDE A RATED ASSEMBLY, APPROVED BY A NATIONALLY RECOGNIZED TESTING AGENCY, AT ALL OPENINGS AND PENETRATIONS.
- SWING ALL DOORS IN THE MEANS OF EGRESS IN THE DIRECTION OF EXIT TRAVEL. PROVIDE EMERGENCY HARDWARE ON ALL EXIT ENCLOSURES AND AT ALL EXIT DISCHARGE.
- PROVIDE LEVER HANDLE OR PUSH OPERATED HARDWARE ON ALL DOORS NOT IN THE MEANS OF EGRESS.
- PROVIDE ONE AND ONE HALF INCH TUBES FOR ALL HANDRAILS AND GUARDRAILS. SMALLER TUBE AND PIPE SIZED ARE ALLOWED FOR THE SUPPORT ASSEMBLY IN COMPLIANCE WITH ALL CODES ADOPTED BY THE JURISDICTION HAVING AUTHORITY.
- DO NOT INTERCONNECT DUCT SYSTEMS WITH OTHER BUILDING EXHAUST SYSTEMS.
- COMBUSTIBLE INTERIOR TRIM SHALL BE CLASS A, B OR C WITH A FLAME SPREAD RATING OF 200 OR LESS.
- MAINTAIN AND PROTECT ONE SET OF APPROVED PERMIT DOCUMENT ON SITE AT ALL TIMES. DO NOT ALLOW WORKMEN ACCESS TO THE PERMIT DOCUMENTS.
- MAINTAIN AND KEEP CURRENT, RECORD DOCUMENTS INCLUDING BUT NOT LIMITED TO THE DRAWINGS AND THE PROJECT MANUAL, POST ALL ADDENDA, CHANGE ORDERS AND MINOR CHANGES IN THE WORK DAILY. CONFIRM ALL CONSTRUCTION DRAWINGS ARE CURRENT.

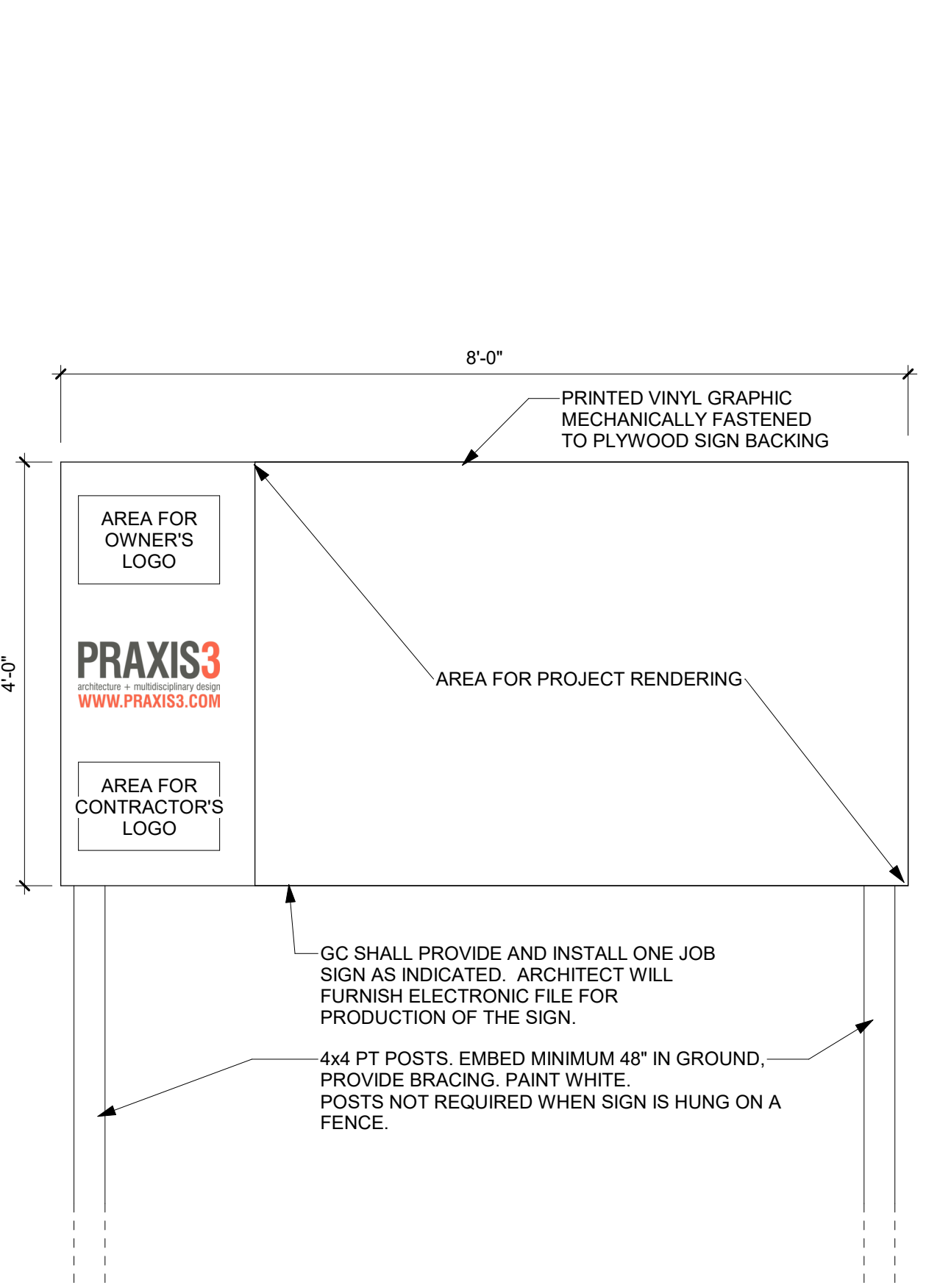
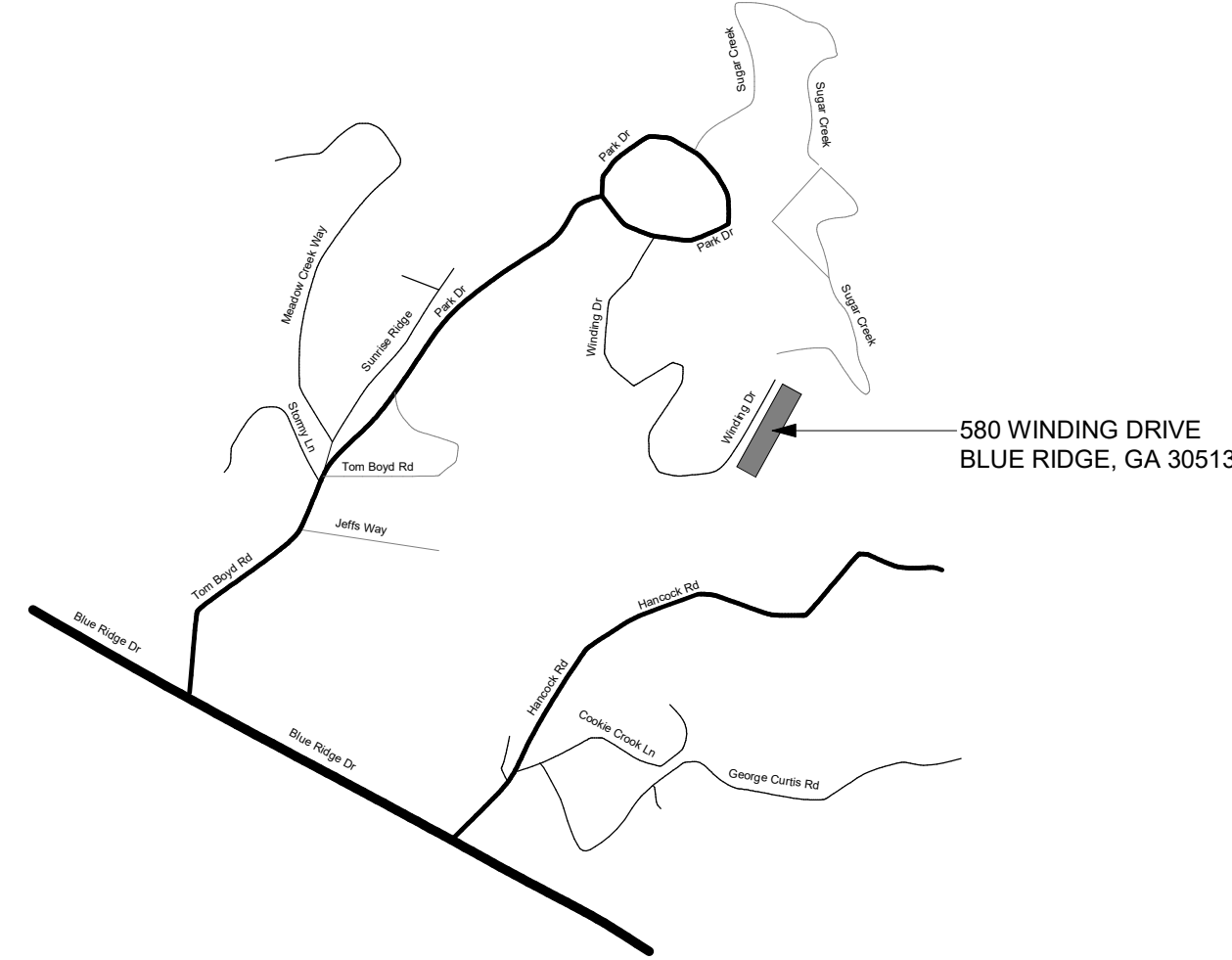
ACCESSIBILITY NOTES

ALL WORK SHALL COMPLY WITH THE AMERICANS WITH DISABILITIES ACT (2010) AND LOCAL ACCESSIBILITY REGULATIONS TO INCLUDE BUT NOT LIMITED TO THE FOLLOWING:

- THE INTERNATIONAL SYMBOL OF ACCESSIBILITY SHALL BE LOCATED ALONGSIDE THE DOOR AT THE LATCH SIDE OF ALL ACCESSIBLE RESTROOM FACILITIES.
- WATER CLOSETS SHALL BE POSITIONED WITH A WALL OR PARTITION TO THE REAR AND ONE SIDE. THE CENTERLINE OF THE WATER CLOSET SHALL BE 17 INCHES MINIMUM TO 18 INCHES MAXIMUM FROM THE SIDE WALL OR PARTITION (CBC 11B-604.2). THE SEAT HEIGHT OF A WATER CLOSET ABOVE THE FINISH FLOOR SHALL BE 17 INCHES MINIMUM AND 19 INCHES MAXIMUM MEASURED TO THE TOP OF THE SEAT. SEATS SHALL NOT BE SPRUNG TO RETURN TO A LIFTED POSITION.
- ACCESSIBLE URINALS SHALL BE THE STALL-TYPE OR THE WALL-HUNG TYPE WITH THE RIM 17 INCHES MAXIMUM ABOVE THE FINISH FLOOR OR GROUND. URINALS SHALL BE 13 1/2 INCHES DEEP MINIMUM MEASURED FROM THE OUTER FACE OF THE URINAL RIM TO THE BACK OF THE FIXTURE. PROVIDE A CLEAR FLOOR SPACE 30" X 48" IN FRONT OF THE ACCESSIBLE URINAL.
- LAVATORIES SHALL BE INSTALLED WITH THE FRONT OF THE HIGHER OF THE RIM OR COUNTER SURFACE 34 INCHES MAXIMUM ABOVE THE FINISH FLOOR WITH A CLEARANCE OF 20" FROM THE FLOOR TO THE BOTTOM OF THE APRON. SPACE UNDER A LAVATORY BETWEEN 9 INCHES AND 27 INCHES ABOVE THE FINISH FLOOR OR GROUND SHALL BE CONSIDERED KNEE CLEARANCE. KNEE CLEARANCE SHALL EXTEND 25 INCHES MAXIMUM UNDER AN ELEMENT AT 9 INCHES ABOVE THE FINISH FLOOR. THE KNEE CLEARANCE SHALL BE 11 INCHES DEEP MINIMUM AT 9 INCHES ABOVE THE FINISH FLOOR AND 8 INCHES DEEP MINIMUM AT 27 INCHES ABOVE THE FINISH FLOOR. SPACE UNDER A LAVATORY BETWEEN THE FINISH FLOOR OR GROUND AND 9 INCHES ABOVE THE FINISH FLOOR OR GROUND SHALL BE CONSIDERED TOE CLEARANCE. TOE CLEARANCE SHALL EXTEND 25 INCHES MAXIMUM AND 17 INCHES MINIMUM UNDER A LAVATORY. KNEE CLEARANCE SHALL BE 30 INCHES WIDE MINIMUM.
- WATER SUPPLY AND DRAIN PIPES UNDER LAVATORIES AND SINKS SHALL BE INSULATED OR OTHERWISE CONFIGURED TO PROTECT AGAINST CONTACT. THERE SHALL BE NO SHARP OR ABRASIVE SURFACES UNDER LAVATORIES AND SINKS.
- CONTROLS FOR FAUCETS SHALL BE OPERABLE WITH ONE HAND AND SHALL NOT REQUIRE TIGHT GRASPING, PINCHING, OR TWISTING OF THE WRIST. THE FORCE REQUIRED TO ACTIVATE OPERABLE PARTS SHALL BE 5 POUNDS MAXIMUM. HAND-OPERATED METERING FAUCETS SHALL REMAIN OPEN FOR 10 SECONDS MINIMUM.
- MIRRORS LOCATED ABOVE LAVATORIES OR COUNTERTOPS SHALL BE INSTALLED WITH THE BOTTOM EDGE OF THE REFLECTING SURFACE 40 INCHES MAXIMUM ABOVE THE FINISH FLOOR OR GROUND. MIRRORS NOT LOCATED ABOVE LAVATORIES OR COUNTERTOPS SHALL BE INSTALLED WITH THE BOTTOM EDGE OF THE REFLECTING SURFACE 35 INCHES MAXIMUM ABOVE THE FINISH FLOOR OR GROUND.
- DOORS SHALL NOT SWING INTO THE CLEAR FLOOR SPACE OR CLEARANCE REQUIRED FOR ANY FIXTURE. DOORS SHALL BE PERMITTED TO SWING INTO THE REQUIRED TURNING SPACE.
- GRAB BARS SHALL BE INSTALLED IN A HORIZONTAL POSITION, 33 INCHES MINIMUM AND 38 INCHES MAXIMUM ABOVE THE FINISH FLOOR MEASURED TO THE TOP OF THE GRIPPING SURFACE. GRAB BARS AND ANY WALL OR OTHER SURFACES ADJACENT TO GRAB BARS SHALL BE FREE OF SHARP OR ABRASIVE ELEMENTS AND SHALL HAVE ROUNDED EDGES. GRAB BARS SHALL NOT ROTATE WITHIN THEIR FITTINGS. ALLOWABLE STRESSES SHALL NOT BE EXCEEDED FOR MATERIALS USED WHEN A VERTICAL OR HORIZONTAL FORCE OF 250 POUNDS IS APPLIED AT ANY POINT ON THE GRAB BAR, FASTENER, MOUNTING DEVICE, OR SUPPORTING STRUCTURE.
- DRINKING FOUNTAINS SHALL BE PROVIDED WITH SPOUT OUTLETS AT 36 INCHES MAXIMUM ABOVE THE FINISH FLOOR AND 38 INCHES MINIMUM AND 43 INCHES MAXIMUM ABOVE THE FINISH FLOOR OR GROUND. THE SPOUT SHALL BE LOCATED 15 INCHES MINIMUM FROM THE VERTICAL SUPPORT AND 5 INCHES MAXIMUM FROM THE FRONT EDGE OF THE UNIT, INCLUDING BUMPERS. THE SPOUT SHALL PROVIDE A FLOW OF WATER 4 INCHES HIGH MINIMUM AND SHALL BE LOCATED 5 INCHES MAXIMUM FROM THE FRONT OF THE UNIT. THE ANGLE OF THE WATER STREAM SHALL BE MEASURED HORIZONTALLY RELATIVE TO THE FRONT FACE OF THE UNIT, WHERE SPOUTS ARE LOCATED LESS THAN 3 INCHES OF THE FRONT OF THE UNIT, THE ANGLE OF THE WATER STREAM SHALL BE 30 DEGREES MAXIMUM. WHERE SPOUTS ARE LOCATED BETWEEN 3 INCHES AND 5 INCHES MAXIMUM FROM THE FRONT OF THE UNIT, THE ANGLE OF THE WATER STREAM SHALL BE 15 DEGREES MAXIMUM.
- DOOR CLOSERS SHALL BE ADJUSTED SO THAT FROM AN OPEN POSITION OF 90 DEGREES, THE TIME REQUIRED TO MOVE THE DOOR TO A POSITION OF 12 DEGREES FROM THE LATCH IS 5 SECONDS MINIMUM.
- FIRE DOORS SHALL HAVE A MINIMUM OPENING FORCE ALLOWABLE BY THE APPROPRIATE ADMINISTRATIVE AUTHORITY. THE FORCE FOR PUSHING OR PULLING OPEN A DOOR OR GATE OTHER THAN FIRE DOORS SHALL BE 5 POUNDS MAXIMUM. THESE FORCES DO NOT APPLY TO THE FORCE REQUIRED TO RETRACT LATCH BOLTS OR DISENGAGE OTHER DEVICES THAT HOLD THE DOOR OR GATE IN A CLOSED POSITION.
- FIRE ALARM SYSTEMS SHALL HAVE PERMANENTLY INSTALLED AUDIBLE AND VISIBLE ALARMS COMPLYING WITH NFPA 72 AND ANSI A117.1, EXCEPT THAT THE MAXIMUM ALLOWABLE SOUND LEVEL OF AUDIBLE NOTIFICATION APPLIANCES COMPLYING WITH SECTION 4-3.2.1 OF NFPA 72 (2022 EDITION) SHALL HAVE A SOUND LEVEL NO MORE THAN 110 DB AT THE MINIMUM HEARING DISTANCE FROM THE AUDIBLE APPLIANCE.
- FLOOR AND GROUND SURFACES SHALL BE STABLE, FIRM, AND SLIP RESISTANT. CHANGES IN LEVEL OF 1/4 INCH HIGH MAXIMUM SHALL BE PERMITTED TO BE VERTICAL. CHANGES IN LEVEL BETWEEN 1/4 INCH HIGH MINIMUM AND 1/2 INCH HIGH MAXIMUM SHALL BE BEVELED WITH A SLOPE NOT STEEPER THAN 1:2.
- FLOOR OR GROUND SURFACE WITHIN REQUIRED MANEUVERING CLEARANCES AT DOORS SHALL COMPLY WITH 15. CHANGES IN LEVEL ARE NOT PERMITTED. EXCEPTIONS:
 - 1. SLOPES NOT STEEPER THAN 1:48 SHALL BE PERMITTED.
 - 2. CHANGES IN LEVEL AT THRESHOLDS COMPLYING WITH 16 SHALL BE PERMITTED.
- THRESHOLDS, IF PROVIDED AT DOORWAYS, SHALL BE 1/2 INCH HIGH MAXIMUM.

LOCATION MAP

NOT TO SCALE



PROJECT SIGN DETAIL

3/4" = 1'-0"

Client:

Fannin County

370 Tom Boyd Road
Blue Ridge, Georgia 30513

Project Number: 24184
Project Name:

Fannin County Rec.
Center - Phase I

580 Winding Drive
Blue Ridge, Georgia 30513

Key Plan:

Sheet Title:

Abbr, Symbols,
General Notes,
Location Map

Sheet Number:

G002-I